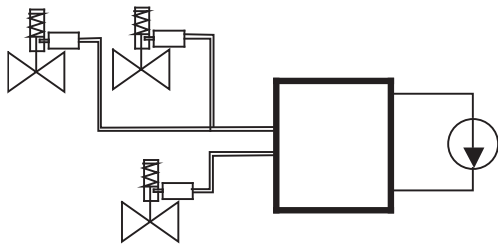


## **Electric**

### **Quick-Closing Valve Systems**

**Blackout-safe power supply of several quick-closing valves with one control cabinet**



- ✓ Room-saving dimensions
- ✓ Easy and time-saving installation, trouble-free system start-up
- ✓ Highest operational safety due to numerous control and alarm functions (with additional external signalization)
- ✓ Very complex valve plants, high number of quick-closing valves possible



- ✓ Voltage supply variable
- ✓ Variable grouping of valves
- ✓ Highly economic system costs
- ✓ Remote release, manual reset
- ✓ Uncomplicated retrofit possible with all ARMATUREN-WOLFF quick-closing valves

*Please contact us at:*

**ARMATUREN-WOLFF**

Friedrich H. Wolff GmbH & Co. KG  
Oehleckerring 29  
22419 Hamburg  
Germany

Tel.: +49 40 532873-0  
Fax: +49 40 532873-29  
aw@armaturen-wolff.de

International Type Approval  
certification (shipbuilding) as well  
as TÜV certificate acc. to PED  
under preparation